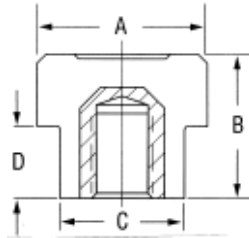


Heavy Duty Plastic Hand Knobs



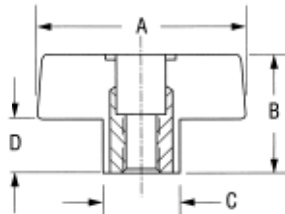
- Phenolic hand knob
- Brass insert
- Rugged design, excellent for high torque applications

PART #	Thread	Depth	A	B	C	D
HK-5032	#8-32	3/8	3/4	11/16	1/2	3/8
HK-5125	1/4-20	3/8	1"	7/8	3/4	7/16
HK-5131	5/16-18	1/2	1-3/16	13/16	13/16	3/8
HK-5137	3/8-16	1/2	1-5/8	7/8	1-5/32	9/32
HK-5250	1/2-13	5/8	2-1/2	1-1/2	1-1/4	21/32

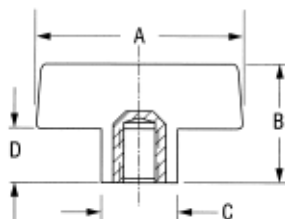
Bar Knobs



- Phenolic hand knob
- Zinc-plated steel hex nut within through hole knob
- Brass threaded insert



PART #	Thread	Depth	THRU-HOLE			
			A	B	C	D
TK-125	1/4-20	Hex Nut	2	1-1/8	3/4	1/2
TK-131	5/16-18	Hex Nut	2	1-1/8	3/4	1/2
TK-137	3/8-16	Hex Nut	2	1-1/8	3/4	1/2



PART #	Thread	Depth	BLIND HOLE			
			A	B	C	D
TK-225	1/4-20	1/2	2-1/2	1-1/8	3/4	1/2
TK-231	5/16-18	1/2	2-1/2	1-1/8	3/4	1/2
TK-237	3/8-16	1/2	2-1/2	1-1/8	3/4	1/2
TK-250	1/2-13	5/8	3-1/2	1-1/8	15/16	1/4